



DIN 2353 Compression Fittings Cutting Rings

Precision
Profession
Excellence

since 1991 **SRT**



Table of contents.



About us

Our company story
since 1991



Our products

Product portfolio



Tech. Information

Technical information
on our products



More info

Assembly guidance
and more



01

About us.

A story since 1991 with
passion

Our company.

Established in 1991 by Mr. Xu, our company was born from a deep passion for engineering excellence and a relentless pursuit of perfection. Specializing in **DIN 2353/ISO 8434-1 fittings**, we have focused exclusively on this **DIN 3861 cutting rings** for decades. This singular focus has allowed us to refine our expertise and deliver products that are competitive in the global market. After 3 decades, we are committed to shaping our company into an elite SME in hydraulics industry.



since 1991 **SRT**

As a family-owned business, we take pride in our unwavering commitment to precision, durability, and reliability.

Why choose us?

We have focused exclusively on **DIN 2353/ISO 8434-1** compression fittings cutting rings since 3 decades. We believe the **excellence** comes always with the **consistency**.



Reason 01

30+ years of experience



Reason 02

High quality performance to DIN3861 standard



Reason 03

Fast delivery worldwide



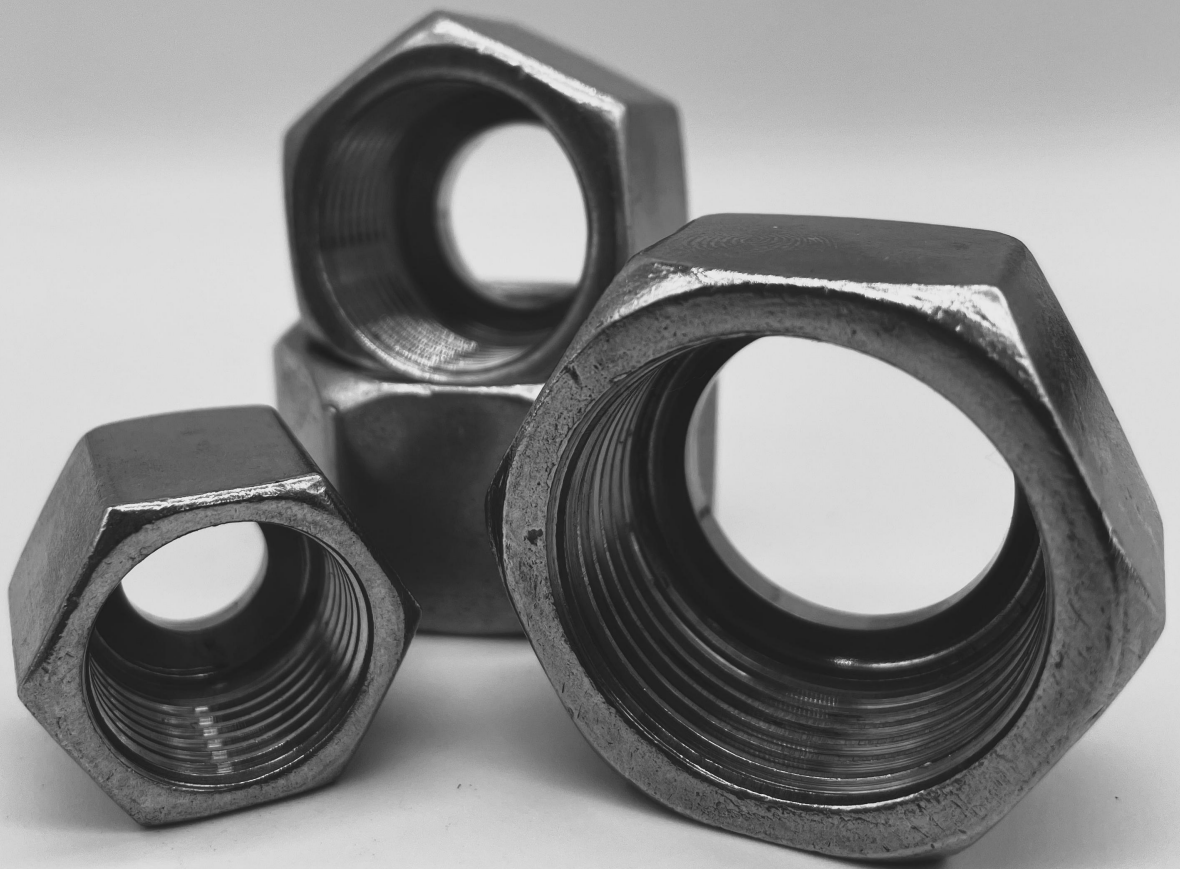
Reason 04

Competitive cost-performance ratio



Reason 05

Fast reaction and smooth communication



02

Our products.

DIN 3861/DIN 3870

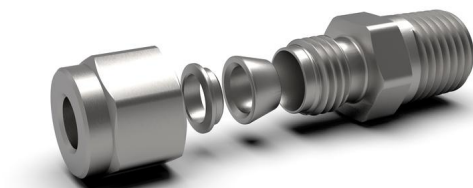
Cutting Rings and
Nuts

Product Portfolio



Single Cutting Ring

Optimised cutting geometry design to ensure maximum leak-tightness.



Double ferrules

Unique surface hardening process and treatment for optimised performance.



Cutting Ring with Elastomeric Seal

Enhanced seal's reliability with uniform depth of incision and slight seal's expansion.



Nuts

Nuts can be paired with cutting rings by purchasing.

SRT provides products and professional consulting services on every DIN 2353/ISO 8434-1 fittings.

03

Tech. Information

The excellence
behind the
engineering.



Single Cutting Ring DIN 3861

- **Optimized Material**

We use **316-Ti(1.4571)** with enhanced corrosion resistance and durability.

- **Optimized Design**

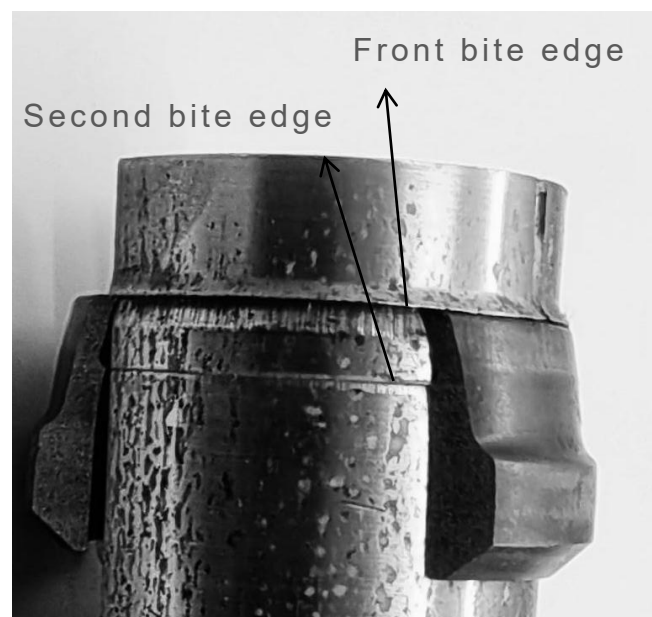
We use **double-edge** design to ensure a leakproof-tightness.

- **Optimized Hardening**

A precise and optimum indentation in both steel and stainless steel tubes with our innovated hardening process.

- **Supereme Quality**

- ✓ High strength for optimum tube indentation
- ✓ High dynamic load-bearing capacity
- ✓ Low spring recovery after assembly
- ✓ Suitable for use in steel and stainless steel tube



Single Cutting Ring

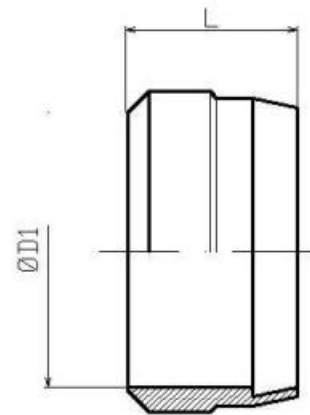
DIN 3861

- **Working Pressure**

SRT company's cutting rings with LL, L and S series exceed the pressure levels (PB) required by the DIN EN 8434-1 standard.

- **Ordering Information**

Order No.	Series	OD/mm	L1/mm
SRT-06LL	LL	6	9
SRT-08LL	LL	8	9.5
SRT-10LL	LL	10	10
SRT-12LL	LL	12	10.2
SRT-06L	L/S	6	9
SRT-08L	L/S	8	9.5
SRT-10L	L/S	10	10
SRT-12L	L/S	12	10.2
SRT-14S	S	14	10.5
SRT-15L	L	15	10.5
SRT-16S	S	16	10.5
SRT-18L	L	18	11
SRT-20S	S	20	12.5
SRT-22L	L	22	11
SRT-25S	S	25	12.5
SRT-28L	L	28	11.5
SRT-30S	S	30	13
SRT-35L	L	35	13
SRT-38S	S	38	13.5
SRT-42L	L	42	13.5



Material can choose from:

316-Ti (1.4571)
316L (1.4404)
SPCC (carbon steel)

LL: Extra Light series
L: Light series
S: Heavy series

Double Ferrules DIN 2353

- **Secure and Tight Connection**

The front ferrule's minimum expansion helps maintain the structural integrity of the tube, while the back ferrule's precise cutting action ensures a reliable seal, even under high pressure or vibration.



- **Optimized surface Treatment**

- ✓ Enhanced surface hardness
- ✓ Sharper bite into the tube by rear ferrule
- ✓ Improved corrosion resistance

Double ferrules are specialized components used in tubing and instrumentation systems, particularly in high-pressure and high-precision applications.

- **Precise Machining**

The high-quality surface finish of the front and back ferrules is a critical factor in ensuring low torque during assembly and overall performance.

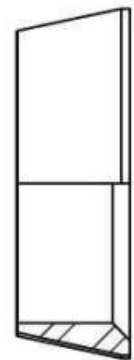
Double Ferrules

DIN 2353

- Ordering Information

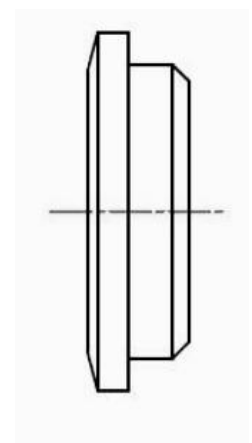
- Front Ferrule

Order No.	OD/mm
SRT-FF-06	6
SRT-FF-08	8
SRT-FF-10	10
SRT-FF-12	12
SRT-FF-14	14
SRT-FF-15	15
SRT-FF-16	16
SRT-FF-18	18
SRT-FF-20	20
SRT-FF-22	22
SRT-FF-25	25



- Rear Ferrule

Order No.	OD/mm
SRT-RF-06	6
SRT-RF-08	8
SRT-RF-10	10
SRT-RF-12	12
SRT-RF-14	14
SRT-RF-15	15
SRT-RF-16	16
SRT-RF-18	18
SRT-RF-20	20
SRT-RF-22	22
SRT-RF-25	25



Cutting Ring with Elastomeric Seal

- **Optimized Assembly**

The sealing and retaining rings are combined as a pair. The elastomeric seal assures leakfree operation without retightening — even under severe working conditions.

- **Optimized Surface Treatment**

The specially surface-treated cutting ring maintains the corrosion resistance of the original base material.

- **Optimized Machining Process**

The unique processing technique endows the steel retaining ring of the soft sealing with high strength and dimensional consistency. It ensures uniform depth of the ferrule cut while inducing a slight expansion in the outer diameter of the soft sealing.



The elastomeric seal is located in between the inner cone of the fitting body and the tube surface, thus blocking the only possible leak path. Due to its large cross-section, the seal effectively compensates for all manufacturing tolerances on tube and fitting cone.

Cutting Ring with Elastomeric Seal

- Material

316L (1.4404)

- Ordering Information

Order No.	Series	OD/mm
SRT-SS-06L	L/S	6
SRT-SS-08L	L/S	8
SRT-SS-10L	L/S	10
SRT-SS-12L	L/S	12
SRT-SS-14S	S	14
SRT-SS-15L	L	15
SRT-SS-16S	S	16
SRT-SS-18L	L	18
SRT-SS-20S	S	20
SRT-SS-22L	L	22
SRT-SS-25S	S	25
SRT-SS-28L	L	28
SRT-SS-30S	S	30
SRT-SS-35L	L	35
SRT-SS-38S	S	38
SRT-SS-42L	L	42

L: Light series
S: Heavy series

Nuts

DIN 3870

- **Material**

316L (1.4404)

- **Ordering Information**

Order No.	Series	OD/mm	Ø F1
SRT-N-06L	L	6	12*1.5
SRT-N-08L	L	8	14*1.5
SRT-N-10L	L	10	16*1.5
SRT-N-12L	L	12	18*1.5
SRT-N-06L	S	6	14*1.5
SRT-N-08L	S	8	16*1.5
SRT-N-10L	S	10	18*1.5
SRT-N-12L	S	12	20*1.5
SRT-N-14S	S	14	22*1.5
SRT-N-15L	L	15	22*1.5
SRT-N-16S	S	16	24*1.5
SRT-N-18L	L	18	26*1.5
SRT-N-20S	S	20	30*2
SRT-N-22L	L	22	30*2
SRT-N-25S	S	25	36*2
SRT-N-28L	L	28	36*2
SRT-N-30S	S	30	42*2
SRT-N-35L	L	35	45*2
SRT-N-38S	S	38	52*2
SRT-N-42L	L	42	52*2

L: Light series
S: Heavy series





04

More info.

Assembly
Guidance and
more

Design and Construction

The **three components** of DIN2353/ISO 8434-1 fittings are designed and manufactured to produce a strong, reliable, leak-free joint upon proper assembly.

- **The Body.**

Fitting bodies are available in over thirty configurations. The shaped products (i.e., elbows, tees, crosses) are hot forged, then machined to the stringent fitting specifications. The forging process improves the strength and metallurgical properties of the fitting material. Straight products are made from cold drawn bar stock. The cold drawing operation ensures consistently tight dimensional tolerances, as well as significantly improved strength.

- **The Cutting Ring.**

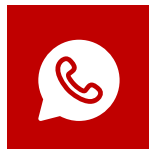
The cutting rings are precision machined with all dimensions and surfaces, particularly the critical bite edges, monitored on an ongoing basis. The rings are then heat treated in a manner that provides the hardness, strength, and toughness necessary to satisfy the demanding service conditions that exist in industry today.

- **The Nut.**

SRT fitting nuts are either cold formed, hot formed or machined from cold drawn material. The cold forming and cold drawing operations provide a more tightly packed grain structure, thus improving the material's strength. In addition, cold forming significantly improves the fatigue properties or endurance limits of the nuts.



Contact



Do you have any questions?

Ruijun Xu

International Sales Manager

Whatsapp: +491625197401

sales@srt-schneidringe.com

<http://srt-schneidringe.com>